

# SAMPLE BALLOT

## Whitman County, Washington

### Special Election

### February 12, 2019

#### Instructions

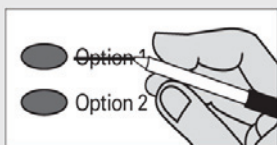
##### How to vote



Use a dark blue or black ink pen to completely fill in the oval to the left of your choice.

Vote for one in each race. If you vote for more than one, no votes will be counted for that race.

##### If you make a mistake



Draw a line through the entire measure response.

Then you may make another choice.



##### Who donates to campaigns?

View contributors for candidates and measures

##### Public Disclosure Commission

www.pdc.wa.gov  
Toll Free (877) 601-2828

#### START VOTING HERE

##### Lamont School District No. 264

##### Special Election - Proposition 1 REPLACEMENT EDUCATIONAL PROGRAMS AND OPERATION LEVY

The Board of Directors of Lamont School District No. 264 adopted Resolution No. 10-2018, concerning a proposition to finance educational programs and operation expenses. This proposition would authorize the District to levy the following excess taxes, in place of an expiring levy, upon all taxable property within the District, for support of educational programs and operation expenses not funded by the State of Washington:

Collection Year	Estimated Levy Rate/\$1,000 Assessed Value	Levy Amount
2020	\$1.50	\$85,000
2021	\$1.50	\$90,000

all as provided in Resolution No. 10-2018 and subject to legal limits on levy rates and amounts at the time of levy. Should this proposition be approved?

Levy, Yes

Levy, No

##### Colton School District No. 306

##### Special Election - Proposition 1 REPLACEMENT EDUCATIONAL PROGRAMS AND OPERATION LEVY

The Board of Directors of Colton School District No. 306 adopted Resolution No. 1811-14, concerning a proposition to finance educational programs and operation expenses. This proposition would authorize the District to levy the following excess taxes, in place of an expiring levy, on all taxable property within the District, for essential educational programs and operation expenses not funded by the State of Washington:

Collection Year	Estimated Levy Rate/\$1,000 Assessed Value	Levy Amount
2020	\$2.50	\$375,000

all as provided in Resolution No. 1811-14 and subject to legal limits on levy rates and amounts at the time of levy. Should this proposition be approved?

Levy, Yes

Levy, No

##### Oakesdale School District No. 324

##### Special Election - Proposition 1 REPLACEMENT EDUCATIONAL PROGRAMS AND OPERATION LEVY

The Board of Directors of Oakesdale School District No. 324 adopted Resolution No. 05-1819, concerning a proposition to finance educational programs and operation expenses. This proposition would authorize the District to levy the following excess taxes, replacing an expiring levy, on all taxable property within the District, for educational programs and operation expenses not funded by the State:

Collection Year	Estimated Levy Rate/\$1,000 Assessed Value	Levy Amount
2020	\$3.67	\$667,000
2021	\$3.67	\$667,000
2022	\$3.67	\$667,000
2023	\$3.67	\$667,000

all as provided in Resolution No. 05-1819 and subject to legal limits on levy rates and amounts at the time of levy. Should this proposition be approved?

Levy, Yes

Levy, No

##### Town of Colton

##### Special Election - Proposition #1

##### A PROPOSITION TO AUTHORIZE THE LEVY OF ADDITIONAL TAXES

Shall the Town of Colton be authorized to levy additional taxes by an excess levy in 2019 for collection in 2020 of approximately \$1.06 per \$1000.00 of assessed value, to raise \$30,000.00 for the Water System?

Yes

No

##### Tekoa Park & Recreation District #6

##### Special Election - Proposition No.1

Shall the Tekoa Parks and Recreation District No. 6 levy a maintenance and operations levy in the amount of \$150,000. An estimated \$1.94 per one thousand dollars of assessed valuation, for collection in 2020, for operation and maintenance in the Park District?

Yes

No

##### Special Election - Proposition No. 2

Shall the Tekoa Parks and Recreation District No. 6 levy a Capital Improvement levy in the amount of \$50,000. An estimated \$0.64 per one thousand dollars of assessed valuation, for collection in 2020, for capital improvements needs including but not limited to pool heater in the Park District?

Yes

No

**LOCAL  
ELECTIONS  
WILL APPEAR  
ONLY IN THE  
AREAS  
ELIGIBLE TO  
VOTE ON  
THEM.**

**SAMPLE BALLOT  
COMPILED BY THE  
WHITMAN COUNTY  
ELECTION DEPARTMENT**