

Effective July 1, 2021 each county auditor in Washington State is required to print and distribute a local voters' pamphlet prior to every special, primary and general election.  
(RCW 29A.32.210)

# Whitman County

## Official Local Voters' Pamphlet

# General Election

## Tuesday, November 8, 2022

When returning your ballot, remember to:

- Postmark by Election Day or
- Deposit in an Official Ballot Drop Box by 8:00 pm on Election Day



*Ballots are Mailed out on Oct. 21.*

*If you haven't received your ballot by Oct. 31, contact the Elections Office.*

Register to vote or change your address until 8:00 pm on Election Day by coming into the Whitman County Elections Office.  
(See page 2 for more information)



### Whitman County Elections Office - Contact Information

**In Person:** 304 N. Main Street, Colfax  
**Phone:** (509) 397-5284  
**Fax:** (509) 397-5281  
**Email:** elections@co.whitman.wa.us

**Hours:** Monday - Friday, 8:00 am - 4:30 pm\*  
\*Open until 8:00 pm on November 8, Election Day  
**Web:** [www.whitmancounty.net/169/election-information](http://www.whitmancounty.net/169/election-information)

Although your ballot came with a prepaid postage return envelope this election, you can save taxpayer dollars by dropping off your ballot in one of the Ballot Boxes which are open 18 days prior to Election Day.

Drop Box locations: **All Drop boxes will close at 8:00 pm on Election Day**

- Whitman County Elections Office, 304 N. Main St., Colfax, WA 99111
- The Alley behind Elections Office, 304 N. Main St., Colfax, WA 99111
- SE Paradise St. just outside Hinrichs Trading Co., Pullman, WA 99163
- Below the Rosauers sign in the parking lot (formerly known as Dissmores), 1205 N Grand Ave, Pullman, WA 99163
- On the WSU campus, outside the west entrance to the CUB on Terrell Mall
- On the WSU campus, next to the Chinook Student Center entrance, 700 NE Thatuna Street, Pullman, WA 99163

Voting Machines for the visually, hearing, or physically impaired are available at the Elections Office in Colfax (304 N. Main St.) 18 days prior to and on election day.

WSU Student Hub, Compton Union Building, 2<sup>nd</sup> Floor Senior Ballroom • Available dates - Monday 11/7, 10am-8pm, Tuesday 11/8, 8am-8pm

If you need a replacement ballot or have any questions, please contact the Whitman County Elections Department at (509) 397-5284, or email us at [elections@co.whitman.wa.us](mailto:elections@co.whitman.wa.us)





## Letter to Future Voters

Dear Whitman County Voter,

If you have election questions or need a replacement ballot, we are ready to help at 509-397-5284 and elections@co.whitman.wa.us. All of our ballot boxes are secure, open and ready for you. You can vote and return your ballot as early as the day you receive it. Vote early to make sure your ballot is received in time.

We need your help to make sure your vote is counted. During every election we receive ballots that cannot be counted for one reason or another. Here are some common reasons that prevent us from counting your vote:

- **Returning the security sleeve only.** If we don't have a signed declaration, we can't count your ballot. When you return the security sleeve alone, we have no way to contact you. These ballots can't be counted, because the ballot envelope has a barcode that is specific for every voter.
- **No signature on the return envelope.** State law requires you to sign the declaration on your return envelope for your vote to be counted. If we receive an unsigned ballot envelope our office will send you a letter to correct this issue.
- **Signature doesn't match the one we have on file.** Copying someone's signature is nearly impossible and our signature checkers are trained by the Washington State Patrol. **Don't** sign a voter declaration for anyone else, even for your spouse or child. If you sign the incorrect ballot envelope, draw a line through your name and the correct voter can sign above. If we challenge your signature, we send you a letter asking you to update your signature. **If the updated signature matches the signature on the envelope, then we can count your ballot.**
- **Using power of attorney to sign a ballot.** Power of attorney cannot be used to sign someone else's ballot.
- **Late postmark.** We cannot count a ballot with a postmark after election day.
- **Marking your ballot.** Please use black or blue ink pens to completely fill in your voted choice on the ballot. Colored pens/pencils are harder for the tabulation system to read and can slow the scanning process down. Fill the circle of the vote you want to cast. Avoid using an X, or a check mark to make your selection. This also slows the scanning process.
- **Selection Choices.** You are **not** required to vote on every issue on the ballot. If you change your mind once you have voted on a race or proposition, draw a line through the original voted choice and bubble; then fill in your updated choice.

Please note that any challenge forms sent to you are time sensitive. Returning these forms promptly helps us get your voted ballot out of its challenged state and moved through the rest of the ballot processing system.

Thank you and happy voting,  
Whitman County Elections Staff



## Participating Jurisdictions

The following jurisdictions have a resolution and/or a candidate position included in this pamphlet:

- |   |   |   |
|---|---|---|
| i. Whitman County Assessor              | viii. Whitman County Treasurer  | xii. Fires: Fire Dist. #8   |
| ii. Whitman County Auditor              | ix. District Court Judge Pos #1   | xiii. Park & Recs: St. John Dist. #3, Rosalia Dist. #5, Tekoa Dist. #6. |
| iii. Whitman County Clerk               | x. Hospital: Hospital 1-A   | xiv. Cemeteries: Garfield Cem. Dist. #2, Endicott Cem. Dist. #4         |
| iv. County Commissioner District # 3    | xi. Cities/ Towns: Town of Colton, Town of Endicott, City of Palouse, Town of Rosalia, Town of St. John, City of Tekoa, Town of Uniontown |   |
| v. Whitman County Coroner               |   |   |
| vi. Whitman County Prosecuting Attorney |   |   |
| vii. Whitman County Sheriff             |   |   |



## Jurisdictions Waivered out of this pamphlet due to financial hardship

Town of Oakesdale  
Garfield Park & Rec #2

Oakesdale Park & Rec #4  
Oakesdale Cem. Dist. #1



**To Register to Vote, You Must:**

- Be a citizen of the United States;
- Have lived at this address in Washington for at least 30 days immediately before the next election at which I vote;
- Be at least 16 years old by Election Day;
- Not be disqualified from voting due to a court order; and
- Not currently serving a sentence of total confinement under the jurisdiction of the department of corrections for a Washington felony conviction.
- Not currently incarcerated for a federal or out-of-state felony conviction.

**How to Register to Vote or Change Your Address in Time for the Primary Election:**



Go to [MyVote.wa.gov](http://MyVote.wa.gov) on or before October 31 if you have a current Washington State driver license or I.D. card.



Complete and return a Washington State Voter Registration Form. Forms must be received in the Auditor's Office by Nov. 8. Registration forms are online, or can be obtained by contacting the Whitman County Elections Office.



Come into the Whitman County Elections Office, by 8:00 pm on Election Day.

**Registration Deadlines for the General Election:**



Voter registration and address changes online or by mail **must be received by October 31.**

After October 31, visit our office to register to vote or change your address by 8:00 pm on Election Day.

**Military or Overseas Voters:**



Maintain your voter registration while in the military or living outside the United States. To register, use your home of record (or that of a family member).

You may receive your ballot by mail, email, or fax. Contact us for more information.



**Voting Instructions**

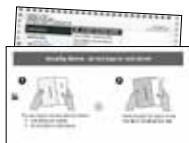
**1.** The ballot packet will be mailed to you and will include your official ballot, a security sleeve, and a postage-paid return envelope.



**2.** To vote the ballot, fill in the oval next to your choice with a blue or black pen. Vote for only one in each contest or measure.



**3.** Place your voted ballot into the security sleeve.  
*If you forget the security sleeve, your ballot will still be counted.*



**4.** Put the ballot/security sleeve into the return envelope and seal.

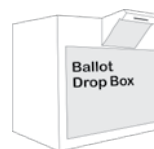


**5.** Sign and date your return envelope. **Your signature on the return envelope is required for your ballot to be counted.**



**6.** Return your ballot to the Whitman County Elections Office by ballot drop box or mail.

Or



Ballot must be in the drop box by 8:00 pm, Nov. 8

Or



Ballot must be **postmarked** by Nov. 8


**COUNTY | COUNTY ASSESSOR | PARTISAN OFFICE | SHORT & 4 YEAR TERM**

**NO PHOTO  
SUBMITTED**

**Wraylee  
Flodin**

(Prefers Republican Party)

No Information Submitted

**Unopposed**

**COUNTY | COUNTY AUDITOR | PARTISAN OFFICE | 4 YEAR TERM**


**Sandy  
Jamison**

(Prefers Republican Party)

**Elected Experience:** I am completing my fourth year as your elected Whitman County Auditor. I have also served on the Garfield School Board and the Garfield Park & Rec Board, both of which are elected positions.

**Professional/Work Experience:** I have 40 years of work experience in the financial accounting arena, including positions as a CFO, Controller and University Accounting Instructor.

**Education:** B.A. in Business Administration (Accounting option) from WSU  
M.B.A. from WSU  
Hold a current CPA certificate

**Community Service:** Garfield School Board, Garfield Park & Rec Board, Chapter IO of PEO, Peace Lutheran Church in Colfax, Meals on Wheels, Distinguished Young Women program for Garfield-Palouse.

**Statement:** I set three main goals four years ago when I became your Auditor: for Whitman County to pass all state audits; to maintain a helpful environment for all when interacting with the Auditor's office; and to leave a positive legacy of public service to Whitman County.

I strive to continually achieve these goals. We have passed all of our financial and accountability audits. My staff consistently provides a pleasant and helpful environment at our public interfacing desks. Every day that I enter the Courthouse as a public servant is a day that I'm proud to include in my legacy.

The majority of my time as your Auditor these past four years was spent in the Elections Office, securing accurate and fraud-free elections for Whitman County. I have faith in Washington's mail-in ballot system, and I would ask that you continue to have faith in my ability to manage our county's part of the voting process.

It's been a pleasure to serve the patrons of Whitman County during my first term. I feel that I have now reached a level of knowledge and experience where I can be of even greater assistance to the public during this next term.

**Contact information:** Email: jamison99130@gmail.com

**Unopposed**



## COUNTY | COUNTY COMMISSIONER NO. 3 | PARTISAN OFFICE | 4 YEAR TERM

**Michael Largent**

(Prefers Republican Party)

**Elected Experience:** Whitman County Commissioner, Precinct Committee Officer, President Washington State Association of Counties, Vice Chair Washington Counties Insurance Fund

**Other Professional Experience:** Washington State University-economics research, Corporate Accountant, Farm owner/operator, Legislative Assistant in Washington State Senate, Washington Rural Counties Insurance Fund board, Palouse Basin Aquifer Committee board, WSAC Legislative Steering Committee, National Association of Counties board

**Education:** Colfax High School, Washington State University, Washington State Ag Forestry Leadership

**Community Service:** Whitman County Association of Wheat Growers board, Snake River Salmon Recovery Board, Palouse Empire Fair board, Onecho Bible Church

**Statement:** I am a lifelong resident of Whitman County. I was raised on the family farm and graduated from Colfax schools. I received my Bachelor's degree in finance and accounting from Washington State University and my CPA certification in 1984. For most of my career I operated our family farm before being elected County Commissioner in 2006.

This past year I had the pleasure of serving as the president of the Washington State Association of Counties representing all county commissioners across the state. I was elected because I had proven I can work across party lines, with grace and respect for diverse opinions.

County government allocates limited resources across duties constitutionally and statutorily assigned. You can't do that well with partisan rhetoric, generalizations and no relevant experience.

As the deadline for filing for office approached, I was strongly encouraged by my colleagues and community, both Republican and Democrat, to continue for another term as our choices were surprisingly limited. Our Whitman County team has risen to some tough challenges lately. I would appreciate your vote to remain on that team.

My father once told me, "It is better to light a single candle than to curse the darkness". Indeed.

**Candidate Contact Information:** michael.d.largent@gmail.com

**John-Mark Mahnkey**

(Prefers Democratic Party)

**Elected Experience:** Vice-chair of Whitman County Democrats

**Other Professional Experience:** INB/Idavend Broadcasting-Air-talent/Music/Production & Programming ZFun 106, Rock 1025, Bull Country; Pullman Radio- Hits 1047, NewsTalk 1150, New Country 1043 & Hits 1047; Marquee Productions- Voice-over & Audio Production

**Education:** Primary schooling in Oakesdale, Colfax, & Pullman; PHS Class of 1987; National Broadcasting School- Associate in Broadcast Media; Pierce College- Entertainment & Media; TCC- Humanities

**Community Service:** Pullman Depot Heritage Center- Executive Board, Chair Train Car committee; Whitman County Humane Society- Board of Directors, Chair Cruzin' for Critters; Whitman County Historical Society- Oral History Project; Emcee Pullman Spring Egg Hunt; Emcee 2021 Colfax Winterfest; Kiwanis

**Statement:** Whitman County stands as one of the most impoverished counties in Washington State according to the US Census Bureau. Thousands of families and residents of Whitman County are struggling to afford their monthly living expenses. We need county government that supports our working families and businesses while giving them opportunities to achieve their goals and dreams. Whitman County needs a commissioner who is ready to tackle these issues.

I will fight to protect and preserve necessary funding for critical operations such as the health department and law enforcement, encouraging tourism and growth, and ensuring county government is operating to 21st century standards.

Common-sense must make a comeback, working in the best interest of all county residents. Regardless of political leanings, we need to work together, because we all share the same common ground. I look forward to a race centered on the issues and needs of our community and discussing these issues in the public forum.

*John-Mark is a 5th generation resident of Whitman County, the grandson of the late Alice Robinson of Oakesdale, son of Texas Ann Robinson and the late Mark Mahnkey. John-Mark resides in Pullman with his wife, Denise, and their dog, Khi.*

**Candidate Contact Information:**

Email Address: info@VoteJohnMark.com

Phone Number: 208-301-0487

Website Address: VoteJohnMark.com



## COUNTY | COUNTY CLERK | PARTISAN OFFICE | 4 YEAR TERM

**NO PHOTO  
SUBMITTED**

**Jill  
Whelchel**

(States No Party Preference)

**Unopposed**

No Information Submitted

## COUNTY | COUNTY CORONER | PARTISAN OFFICE | 4 YEAR TERM

**NO PHOTO  
SUBMITTED**

**Annie  
Pillers**

(Prefers Republican Party)

**Unopposed**

No Information Submitted

## COUNTY | COUNTY PROSECUTING ATTORNEY | PARTISAN OFFICE | 4 YEAR TERM

**NO PHOTO  
SUBMITTED**

**Denis  
Tracy**

(Prefers GOP Party)

**Unopposed**

No Information Submitted



COUNTY | COUNTY SHERIFF | PARTISAN OFFICE | 4 YEAR TERM

NO PHOTO  
SUBMITTED

**Brett J.  
Myers**

(Prefers Republican Party)

**Unopposed**

No Information Submitted

COUNTY | COUNTY TREASURER | PARTISAN OFFICE | 4 YEAR TERM

NO PHOTO  
SUBMITTED

**Chris  
Nelson**

(Prefers Republican Party)

**Unopposed**

No Information Submitted

COUNTY | DISTRICT COURT JUDGE POS. 1 | NONPARTISAN OFFICE | 4 YEAR TERM

NO PHOTO  
SUBMITTED

**John  
Hart**

**Unopposed**

No Information Submitted



**Public Hospital District No. 1-A  
(Pullman Regional Hospital)**

**Proposition No. 1**

**Bonds for Hospital Facilities and Equipment**

The Commission of Public Hospital District No. 1A, Whitman County, Washington, adopted Resolution No. 590 concerning a proposition to finance improvements to Pullman Regional Hospital. This proposition would authorize the District to (i) construct an addition to inpatient and outpatient medical facilities for patient and support services, (ii) expand existing space for emergency, surgical, imaging, laboratory, and other specialty diagnostic and therapeutic services, and (iii) carry out other capital improvements; issue no more than \$27,500,000 of general obligation bonds maturing within 30 years; and levy annual excess property taxes to repay the bonds, all as provided in Resolution No. 590.

**Should this proposition be approved:**

Approved

Rejected

**Explanatory Statement**

Public Hospital District IA, Whitman County, Washington (the "District"), operates Pullman Regional Hospital.

The District has determined that the existing condition of its hospital requires that the District construct improvements to and expand its health care facilities and carry out other capital improvements.

To pay for the costs of improvements, the District is proposing a ballot proposition to be voted on by the voters of the District. If approved, this proposition would authorize the District to (i) construct an addition to inpatient and outpatient medical facilities for patient and support services, (ii) expand existing space for emergency, surgical, imaging, laboratory, and other specialty diagnostic and therapeutic services, and (iii) carry out other capital improvements; issue no more than \$27,500,000 of general obligation bonds maturing within 30 years; and levy annual excess property taxes to repay the bonds. The levy rate required to repay the bonds is estimated to be 76 cents per \$1,000 of assessed value. For a home with an assessed value of \$300,000, the estimated monthly tax increase is \$19 per month. Exemptions from taxes may be available to certain homeowners. For more information, please call the Whitman County Assessor's Office at 509- 397-6220.

**Argument For**

Over the last 21 years, Pullman Regional Hospital has expanded our medical services, developed a reputation for excellence, and become a leading regional medical center. Since 2001, Pullman has grown in population from approximately 25,000 to just under 35,000. Hospital services have expanded. The number of physicians, nurses, and staff providing care has grown. The use of advanced medical equipment has increased. Yet, facility size remains the same. To continue providing better access to exceptional healthcare for Pullman, the hospital needs more space.

Addressing current space constraints, the Pullman Regional Hospital Board of Commissioners evaluated a proposed expansion plan and voted unanimously to approve expanding Pullman Regional facilities. The Board of Commissioners further approved a \$27.5 million bond measure to be placed on the November 2022 ballot.

The proposed bond pays for expanding existing space for emergency, surgical, imaging, laboratory, and other specialty diagnostic and therapeutic services. It also ensures the hospital can increase the specialized medical services available in our community.

We agree with this fiscally conservative approach for funding set forth by Board of Commissioners. The total project cost is estimated at \$45 million. Costs not covered by the November bond will be supported by joint efforts between the hospital and the Pullman Regional Hospital Foundation.

The need for expansion of our hospital facilities and care services is critical to the health and wellbeing of our community. We encourage you to support the Board of Commissioners' decision to provide better access to exceptional healthcare for all Pullman residents.

Written By:

James M. Onstad    info@citizenforprh.org  
Rueben Mayes      info@citizenforprh.org

**Argument Against**

No Statement Submitted.





Town of Colton

# Proposition No. 1

## A Proposition to Authorize the Levy of Additional Taxes

Shall the Town of Colton be authorized to levy additional taxes by an excess levy in 2022 for collection in 2023 of approximately .85¢ per \$1000.00 of assessed value, to raise \$30,000.00 for General Operations, Improvement of the Town Streets and the Water/Sewer Systems?

Yes

No

## Explanatory Statement

The proposed special levy of \$30,000 would continue the current level of support for the Town of Colton's general operations, street improvements and water/sewer maintenance and improvements.

## Argument For

No Statement Submitted.

## Argument Against

No Statement Submitted.



Town of Endicott

## Proposition No. 1

### Fire & EMT Protection Levy

Shall the Town of Endicott be authorized to impose a special tax levy in 2022 for collection in 2023 of \$7,500.00 an estimated \$.20, or less per \$1,000.00 of assessed valuation for Fire and EMT Protection?

Yes, Levy

No, Levy

## Explanatory Statement

Funds from this levy will enable the Town to pay for fire and EMT services from the local fire district for the residents of the Town.

## Argument For

No Statement Submitted.

## Argument Against

No Statement Submitted.

Town of Endicott

## Proposition No. 2

### Street Work & Maintenance Levy

Shall the Town of Endicott be authorized to impose a special tax levy in 2022 for collection in 2023 of \$22,000.00 an estimated \$.53, or less per \$1,000.00 of assessed valuation for street work and maintenance?

Yes, Levy

No, Levy

## Explanatory Statement

Funds from this levy will be used by the Town to maintain the streets within the town limits. This includes but is not limited to salaries for public works department, the filling of potholes and cracks in the streets, weed control and snow plowing and sanding in the winter months.

## Argument For

No Statement Submitted.

## Argument Against

No Statement Submitted.



Town of Endicott

### Proposition No. 3

#### Park Maintenance Levy

Shall the Town of Endicott be authorized to impose a special tax levy in 2022 for collection in 2023 of \$11,000.00 an estimated \$.27, or less per \$1,000.00 of assessed valuation for park maintenance.

Yes, Levy

No, Levy

### Explanatory Statement

Funds from this levy will enable the Town to maintain the town parks and Third Street divider. This includes but is not limited to salaries for public works, mowing, weed control and watering of the parks and divider, lawn mower and equipment maintenance.

### Argument For

No Statement Submitted.

### Argument Against

No Statement Submitted.



City of Palouse

## Proposition No. 1

### Excess Property Tax Levy

For the purpose of funding street improvements and street oiling, the City Council of the City of Palouse proposes, pursuant to RCW 84.52.052, to impose an excess property tax levy upon all taxable property within the City in the amount of \$50,000.00, an estimated \$0.7000 per \$1,000.00 of assessed value in the year 2022 for collection in 2023, as provided in Resolution 2022-05.

**Should this proposition be approved?**

Yes

No

## Explanatory Statement

The City of Palouse is seeking support to maintain 173,000 feet of unimproved roads within Palouse's city limits. The city council requests the citizens adopt Proposition 1, Resolution 2022-05 of \$.70/per thousand of assessed property value for this purpose. This assessment would provide the city an estimated revenue of \$50,000.00.

## Argument For

No Statement Submitted.

## Argument Against

No Statement Submitted.

City of Palouse

## Proposition No. 2

### Excess Property Tax Levy

For the purpose of funding the operation and maintenance of the swimming pool, the City Council of the City of Palouse proposes, pursuant to RCW 84.52.052, to impose an excess property tax levy upon all taxable property within the City in the amount of \$47,000.00, an estimated \$0.6300 per \$1,000.00 of assessed value in the year 2022 for collection in 2023, as provided in Resolution 2022-06.

**Should this proposition be approved?**

Yes

No

## Explanatory Statement

The City of Palouse is seeking support for the swimming pool operation and maintenance. The city council requests the citizens support Resolution 2022-06, Proposition 2, which assesses \$.63/per thousand of assessed property value. This assessment would provide the city with an estimated \$47,000.00 in dedicated revenue for the swimming pool operations and maintenance.

## Argument For

No Statement Submitted.

## Argument Against

No Statement Submitted.



City of Palouse

## Proposition No. 3

### Excess Property Tax Levy

For the purpose of funding the operation and maintenance of the infrastructure, the City Council of the City of Palouse proposes, pursuant to RCW 84.52.052, to impose an excess property tax levy upon all taxable property within the City in the amount of \$55,000.00, an estimated \$0.74 per \$1,000.00 of assessed value in the year 2022 for collection in 2023, as provided in Resolution 2022-07.

**Should this proposition be approved?**

Yes

No

## Explanatory Statement

The City of Palouse is seeking support for the operation and maintenance of the infrastructure for the City. The city council requests the citizens adopt Proposition 3, Resolution 2022-07 of \$.74/per thousand of assessed property value for this purpose. This assessment would provide the City with an estimated revenue of \$55,000.00.

## Argument For

No Statement Submitted.

## Argument Against

No Statement Submitted.



## Town of Rosalia

**Proposition No. 1****City Street Levy**

Shall the Town of Rosalia be authorized to impose a special (excess) tax levy of \$3.64 per thousand dollars of 2022 assessed valuation, to be collected in the year 2023, to collect \$95,000 for the City Street Fund, to help defray the costs of street lights, seal coating, shoulder work, capital improvements, equipment and regular maintenance of city street?

**Should this proposition be approved?**

Yes

No

**Explanatory Statement**

The proposed special property tax levy of \$95,000.00 would provide the necessary funds to defray the cost of street lights, seal coating, shoulder work, capital improvements, equipment and regular maintenance of city streets (including plowing/sanding). Additionally, street levy funds may be used in conjunction with grant funding to facilitate future street projects.

**Argument For**

The Street Fund is the only Town fund that does not generate revenue. The majority of funding for streets is provided through a Levy. Street Levy revenue may only be used for street related expenses such as street lights, street maintenance/preservation, street capital improvements and overhead expenses such as vehicle maintenance/fuel, snow removal/sanding and a portion of Public Works salaries. Levy revenue may also be used in conjunction with grant funds to enhance/extend street projects. Improvements and proper maintenance greatly enhance the appearance, safety and comfort of the streets in our town. If your desire is to keep your community a better place to live, please support and vote for the 2023 Street Levy.

Thank you

Written By:

Tim Brown  
Greg Herr  
Jim Babb

Brownweldingandrepair@yahoo.com  
Herrg@yahoo.com  
ajbabb@msn.com

**Argument Against**

No Statement Submitted.



Town of St. John

## Proposition No. 1

### Street Improvements & Maintenance

Shall a special tax levy of \$75,000.00, an estimated \$2.03 per one thousand dollars of assessed valuation, be renewed and collected in 2023, for street improvements and maintenance for the Town of St John, be authorized and approved?

Yes, Levy

No, Levy

## Explanatory Statement

The proposed special property tax levy of \$75,000.00 would continue the *current level* of support for the maintenance, improvement, and replacement of streets, sidewalks, and general maintenance within St John City limits. Recent improvements continue to include chip sealing streets, replacing manhole covers, street sweeping, and replacing culverts for stormwater drainage. These improvements enhance the appearance, safety, and comfort of the streets and sidewalks in our town.

## Argument For

No Statement Submitted.

## Argument Against

No Statement Submitted.



City of Tekoa

## Proposition No. 1

### Street Levy

Shall the City of Tekoa impose a special property tax levy upon taxable property within the City of Tekoa in the amount of \$50,000.00, an estimated \$1.70 per \$1,000.00 of assessed valuation in 2022 for collection in 2023, for ongoing oiling of gravel streets, chip sealing roads, replacing asphalt or repairing and replacing sidewalks?

Yes

No

## Explanatory Statement

The proposed special property tax levy of \$50,000.00 would continue the *current level* of support for the maintenance, improvement or replacement of streets and sidewalks within Tekoa city limits. Recent improvements include the paving of Line Street, chip sealing streets on the northwest side of town and repairing/replacing more than 300 feet of sidewalk. These improvements greatly enhance the appearance, safety and comfort of the streets and sidewalks in our city.

## Argument For

We are extremely pleased with the new pavement on Line St.

Sincerely,  
Eric Marsh

Written by:

Eric Marsh      elmarsh518@yahoo.com

## Argument Against

I Jequetta Lucki once again am against the street levy. The fact is that some streets are more of a pain to work on & those aren't addressed in the same way...IE: the hilly gravel ones.

Respectfully,  
Jequetta Lucki

Written by:

Jequetta Lucki      quettais@yahoo.com





Town of Uniontown

# Proposition No. 1

## Street Maintenance and Operations Levy

The Uniontown Town Council adopted Resolution No. 2022-1 concerning a levy rate increase for street improvements. If passed, Proposition 1 would authorize the Town to increase the Town’s regular property tax levy by \$1.50 per \$1,000 of assessed value for collection for two (2) years beginning in 2023, for the sole purpose of funding general maintenance for residential and arterial streets, including street oiling, snow removal, and street repair in the Town of Uniontown

### Should this proposition be approved?

Yes

No

## Explanatory Statement

The Town of Uniontown has determined the need for funding to provide adequate maintenance of the streets in the town. This measure will authorize the town to levy a property tax at a rate of \$1.50 per every \$1,000 of assessed property value for each of the next two years beginning in 2023. This levy will expire after two years and would require another vote by the public to be extended.

This levy will be used only for the maintenance and general operation of our streets department, including but not limited to street oiling, snow removal, and street repair.

## Argument For

The town of Uniontown desperately needs street maintenance. This levy of \$1.50 per \$1000 dollars of assessed value for a term of 2 years would raise approximately \$75,000 over the term of the levy, for much needed maintenance. This would be a strong foundational start for the town, and hopefully it can be lowered and approved again in the future. Unfortunately, we do not foresee the price of street maintenance decreasing in the near term, we think it will be a great step forward, and want to see the streets of our town improved. Unfortunately, it would be a struggle to make this happen without the additional financial support of our citizens via this levy. With record high inflation, continuing ripple effects from COVID and other economic struggles, we fully understand the burden this can place on a family; our families will see this increase as well. But we strongly believe that the investment in our infrastructure and maintenance is vital to our success. Every dollar we can invest in our community today will pay dividends in the future.

## Argument Against

No Statement Submitted.

Written by:

Mark Davis

Mark\_Davis@uniontownWA.org

**Whitman County Fire District No. 8****Proposition No. 1****Maintenance and Operation Levy**

The Commissioners of Whitman County Fire District No. 8 adopted Resolution No. 2022-02, concerning a proposition to finance a maintenance and operation levy for the District. This proposition would authorize the District to levy an excess property tax on all taxable property within the District at an estimated rate of \$0.38 per \$1,000.00 of assessed value in 2022 to raise \$75,000 per year for four consecutive years, to be collected in 2023, 2024, 2025, and 2026.

**Should this proposition be approved?** Yes No**Explanatory Statement**

No Statement Submitted.

**Argument For**

No Statement Submitted.

**Argument Against**

No Statement Submitted.



St. John Park & Rec District No. 3

# Proposition No. 1

## Pool Operation Levy

Shall a special tax levy of \$55,000, an estimated \$.22 per one thousand dollars of assessed valuation, for the operating fund, swimming pool, capital outlay, and/or cumulative reserve for St. John Park and Recreation District No. 3 be approved for collection in the year 2023.

Yes

No

# Explanatory Statement

The St. John Park and Recreation district is submitting a levy request for \$55,000 to maintain and operate a pool to be used by the community as a place for children and adults to swim during the summer.

# Argument For

No Statement Submitted.

# Argument Against

No Statement Submitted.



## Rosalia Park & Rec District No. 5

# Proposition No. 1

### Special Tax Levy

Shall the Rosalia Park & Recreation District No. 5 be authorized to impose a special (excess) tax levy of \$85,000.00, an estimated \$.48 cents per thousand dollars of assessed valuation, to be collected in the year 2023, in order to help defray the costs of operation and maintenance? This is a zero percent increase of the prior levy.

### Should this proposition be approved?

Yes

No

## Argument For

The Rosalia Park and Recreation District #5 has, and will always be, a great place for kids and families to come and enjoy summer, spring, and fall seasons. On behalf of the For Committee and your local park board members, we hope you vote YES on the 2023 levy so we can continue making the Rosalia Park and Pool a fun and safe place for you and your family.

Thank you

Written by:

Jesse Johnson:                      jessebryce2112@gmail.com

## Explanatory Statement

Funds from this levy will be used for lifeguard and groundskeepers wages, purchase of pool chemicals and supplies, and future improvements. This \$85,000 will not only help us maintain the day-to-day operations of the pool and park, but it allows us to update current equipment that's outdated or broken. Recent improvements include, a new diving board and replacing the old chlorine pump. In the next year, we plan to repair the slides, the diving board stand, and all metal doorjambes. We also plan to update a few smaller items in the outdoor kitchen, which is available to the public for reservation.

## Argument Against

No Statement Submitted.



Tekoa Park & Rec District No. 5

# Proposition No. 1

## Maintenance and Operation Levy

Shall the Tekoa Parks and Recreation District No. 6 one year levy a maintenance and operations levy in the amount of \$130,000. An estimated \$1.63 per one thousand dollars of assessed valuation, for collection in 2023, for operation and maintenance in the Park District?

Yes

No

## Explanatory Statement

The Tekoa Parks and Recreation board voted to request a levy in 2023 for \$130,000. This levy is the main source of income for maintaining and operating the 3 local parks and the pool. The current operating budget for the parks and the pool is \$100,000. The board has voted to increase the budget for 2023 to include updates to the playground equipment in the parks and to replace a failing pump and impeller at the pool. A capital expense fund will also be added to the budget to replace the tarp for the pool and resurface the pool as well. It is the intention of the board to continue these improvements and be able to pay for repairs and/or maintenance on our aging equipment.

Thank you in advance for your vote to approve this levy.

## Argument For

No Statement Submitted.

## Argument Against

No Statement Submitted.



## Whitman County (Garfield) Cemetery District No. 2

### Proposition No. 1

#### Operation and Maintenance Levy

The Whitman County Cemetery District No. 2 – Garfield adopted Resolution No. 2022-01, concerning a proposition to finance maintenance, repairs and increased operating costs: including increased wages, water billing, gas, grass and sprinkle maintenance and finance of new equipment for cemetery maintenance for the year 2023.

This proposition would authorize the Whitman County Cemetery District No. 2 to collect a property tax levy upon all taxable property within the district in the amount of \$90,000 an estimated \$1.02 per \$1,000 assessed value in the year 2022 for collection in 2023.

#### Should this proposition be approved?

Yes

No

## Explanatory Statement

The board of the Whitman County Cemetery District No. 2, Garfield, has proposed proposition 2022-1 to finance the maintenance, repairs and increased operating costs: including increased wages, water bills, fuel, grass and sprinkler maintenance and finance of new equipment for the year 2023.

## Argument For

We as a board are in support of the Garfield Cemetery Levy for 2023. It is much needed to continue to maintain the grounds and beautify future projects that will need to be addressed by the community of Garfield. Your support of the levy will provide much needed funding for wage increases, fuel, water, electricity, and maintenance costs.

Additionally, these funds also support the Silver Creek Cemetery upkeep and maintenance.

Please support this very important and necessary establishment for our town and community members. We appreciate the pride in our community that the residence of Garfield has established. We as a board, greatly appreciate your continued support!

Written by:

Roger Pennell    pennellr@gmail.com  
 Warren Neal     wneal\_180@hotmail.com  
 Daymon Marple    wccd2.dem@gmail.com

## Argument Against

No Statement Submitted.



**Endicott Cemetery District No. 4**

**Proposition No. 1**

**Maintenance and Operation Levy**

The Commissioners of Whitman County (Endicott) Cemetery District No. 4 adopted Resolution No. 2022-03, concerning a proposition to finance a maintenance and operation levy for the District. This proposition would authorize the District to levy an excess property tax on all taxable property within the District at an estimated rate of \$0.22 per \$1,000.00 of assessed value in 2022, to raise \$20,000, to be collected in 2023. This levy renews an existing levy that expires in 2022.

**Should this proposition be approved?**

Yes

No

**Explanatory Statement**

No Statement Submitted.

**Argument For**

No Statement Submitted.

**Argument Against**

No Statement Submitted.



Whitman County Elections  
PO Box 191  
Colfax, WA 99111

PRSR STD  
US POSTAGE  
PAID  
PERMIT 7  
SPOKANE WA

\*\*\*\*\*ECRWSEDDM\*\*\*  
RESIDENTIAL CUSTOMER